

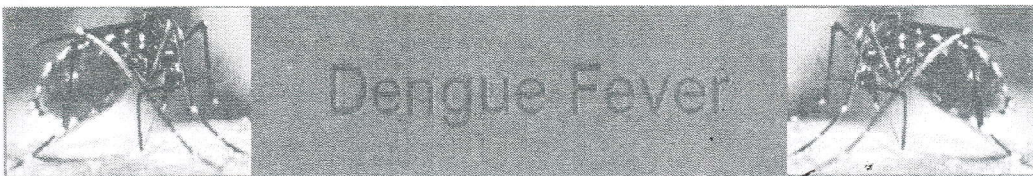
EASTERN UNIVERSITY, SRILANKA
DEPARTMENT OF MATHEMATICS
FIRST EXAMINATION IN SCIENCE –2015/2016
FIRST SEMESTER (Jul. / Aug, 2017)
CC 152 – INTRODUCTION TO APPLICATION SOFTWARE

CPRACTICAL

Answer all questions

Time allowed: 02 hours

- Q1) Using “MS Word 2013” create the following document as shown below and save it as “Dengue.docx” into your Index number folder which created on the Desktop. Insert “CICT” as Header and insert “Your Index No” as Footer.



ABOUT DENGUE

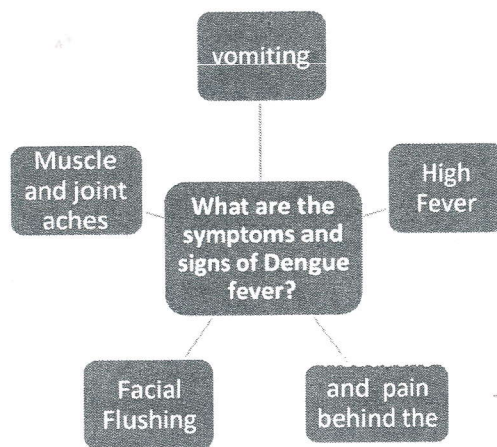
Dengue is transmitted by the bite of an Aedes mosquito infected with any one of the four dengue viruses. It occurs in tropical and sub-tropical areas of the world. Symptoms appear 3—14 days after the infective bite. Dengue fever is a febrile illness that affects infants, young children and adults. Symptoms range from a mild fever, to incapacitating high fever, with severe headache, pain behind the eyes, muscle and joint pain, and rash. There are no specific antiviral medicines for

Dengue. It is important to maintain hydration. Use of acetylsalicylic acid (e.g. aspirin) and non-steroidal anti-inflammatory drugs (e.g. ibuprofen) is not recommended.

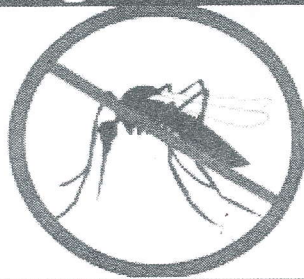
Dengue Haemorrhagic Fever (Fever, Abdominal Pain, Vomiting, Bleeding) Is A Potentially Lethal Complication, Affecting Mainly Children. Early Clinical Diagnosis And Careful Clinical Management By Experienced Physicians And Nurses Increase Survival Of Patients.

According to the World Health Organization (WHO):

- Approximately 2.5 billion people, or two-fifths of the world's population, are now at risk from dengue.
- The disease is now endemic in over 100 countries.
- Dengue hemorrhagic fever is a leading cause of serious illness and death among children in some Asian countries.



Dengue fever

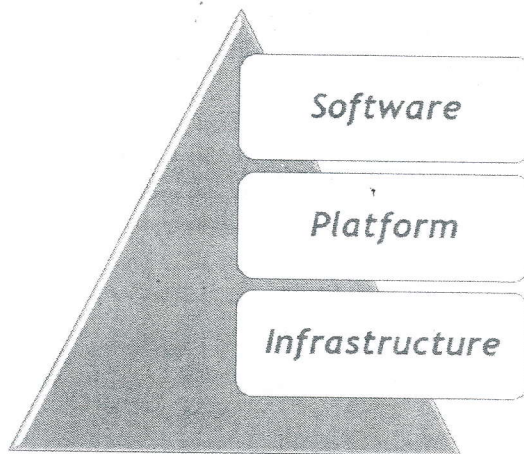


SYNONYMS	Dengue, breakbone fever
SPECIALTY	Infectious disease
SYMPTOMS	Fever, headache, joint pain, rash
COMPLICATIONS	Bleeding, low levels of blood platelets, dangerously low blood pressure
USUAL ONSET	3-14 days after exposure
DURATION	2-7 days
CAUSE	Dengue virus by mosquitos
DIAGNOSTIC METHOD	Detecting antibodies to the virus or its RNA
PREVENTION	Dengue fever vaccine, decreasing mosquito exposure
TREATMENT	Supportive care, intravenous fluids, blood transfusions

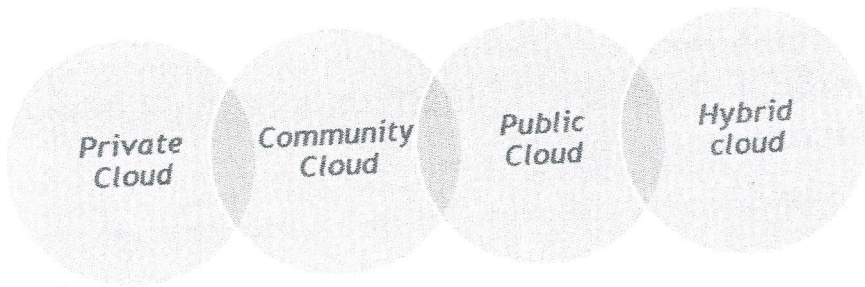
Essential Characteristics

- **On-Demand Self Service:**
 - A consumer can unilaterally provision computing capabilities, automatically without requiring human interaction with each service's provider.
- **Heterogeneous Access:**
 - Capabilities are available over the network and accessed through standard mechanisms that promote use by heterogeneous thin or thick client platforms.
- **Resource Pooling:**
 - The provider's computing resources are pooled to serve multiple consumers using a multi-tenant model.
- **Measured Service:**
 - It will provide analyzable and predictable computing platform.

Service Models



Deployment Models



THANK YOU